

CLASSROOM EXPECTATIONS



BE ON TIME!
BE ON TIME TO SCHOOL
AND EACH CLASS



**USE APPROPRIATE
LANGUAGE**
USE RESPECTFUL LANGUAGE



BE READY!
HAVE BOOKS AND JOURNAL ON
DESK



**SHOW RESPECT
AND KINDNESS**



**KEEP CLASSROOMS
NEAT AND TIDY**



**COMPLETE ALL CLASSWORK
AND HOMEWORK**
COMPLETE ALL OF YOUR SCHOOLWORK
TO THE BEST OF YOUR ABILITY

READY, RESPECTFUL, RESPONSIBLE

SCHOOL CAMPUS EXPECTATIONS



USE BINS PROVIDED



USE APPROPRIATE LANGUAGE AND VOLUME LEVELS



BE RESPECTFUL OF SCHOOL FACILITIES



EAT IN ALLOCATED AREAS



BE INCLUSIVE TO ALL SCHOOL MEMBERS



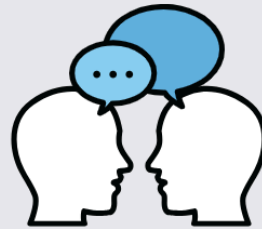
REPORT ANY ISSUES TO A STAFF MEMBER

READY, RESPECTFUL, RESPONSIBLE

CORRIDOR EXPECTATIONS



FOLLOW THE ONE-WAY SYSTEM



LISTEN TO AND FOLLOW STAFF INSTRUCTIONS



USE APPROPRIATE LANGUAGE AND VOLUME LEVELS



WALK STRAIGHT TO YOUR CLASS



BRING JOURNAL WITH A NOTE IF ON CORRIDOR DURING CLASS



LINE UP IN SINGLE FILE OUTSIDE CLASSROOMS

READY, RESPECTFUL, RESPONSIBLE

CANTEEN EXPECTATIONS



**QUEUE IN AN
ORDERLY MANNER AT
THE CORRECT ENTRY**



**HAVE YOUR
CANTEEN CARD OR
CASH READY**



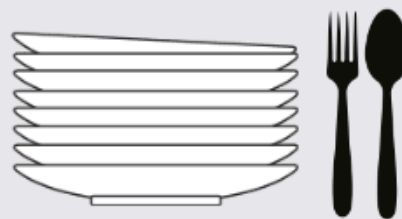
**EAT IN ALLOCATED
AREAS**



**USE BINS
PROVIDED**



**SAY 'PLEASE' AND
'THANK YOU' TO
STAFF MEMBERS**



**RETURN PLATES AND
CUTLERY TO THEIR
STATION**

READY, RESPECTFUL, RESPONSIBLE

BATHROOM EXPECTATIONS



**USE TOILETS AT
BREAK AND LUNCH**



**KEEP FOOD AND
DRINK OUT OF THE
TOILETS**



**KEEP AREAS CLEAN
AND TIDY**



**ONE PERSON PER
CUBICLE**



**LEAVE THE TOILET
WHEN FINISHED
WASHING HANDS**



**REPORT ANY ISSUES
TO A STAFF MEMBER**

READY, RESPECTFUL, RESPONSIBLE